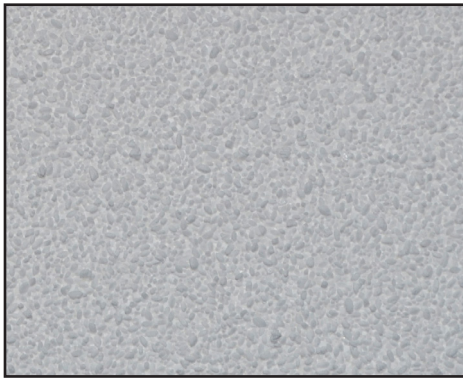




**CHLOR-AWAY®**  
 DRY CHLORINE NEUTRALIZER

**PRODUCT DATA SHEET**



CHLOR-AWAY® deactivates the chlorine in municipal water supplies. CHLOR-AWAY should be used when the mix water to build BIG-FOOT® Polymer Slurry comes from a city fire hydrant and measures above .3 ppm on chlorine test strips. This white granular powder prevents the early decrease in viscosity of drilling slurry and extends the re-use time of BIG-FOOT slurry.

**BENEFITS**

- Drilling slurry viscosity lasts longer
- Prevent the chlorine in municipal water from breaking down the slurry
- Improve polymer slurry lifespan
- Efficient way to neutralize chlorine

| TYPICAL PROPERTIES |                       |
|--------------------|-----------------------|
| Appearance         | White granular powder |
| Density            | 1.68 lb/ft³           |
|                    |                       |

**MIXING INSTRUCTIONS:** CHLOR-AWAY should be added at a dosage of 2 lbs per 2,000 gallons of municipal mix water. CHLOR-AWAY should be added first prior to adding M-BOOSTER® pH adjuster and should be added through the MATRIX Hydro-Mixer. After CHLOR-AWAY and M-BOOSTER have dissolved, start adding the BIG-FOOT polymer.

**PACKAGING:** CHLOR-AWAY is packaged in 50 lb/plastic pails (22.68 kg), 36 pails per pallet. All pallets arrive wrapped in orange stretch wrap.

**AVAILABILITY:** CHLOR-AWAY Dry Chlorine Neutralizer can be purchased through any MATRIX Construction Products Representative. [Orders@matrixcp.com](mailto:Orders@matrixcp.com)



The information contained herein is believed to be accurate and reliable. MATRIX Construction Products, LLC (MATRIX) accepts no responsibility for the results obtained through application of this product. MATRIX reserves the right to update information without notice. For the most current information see our website [matrixcp.com](http://matrixcp.com).  
**PDS UPDATED JANUARY 2024**

